



Hotel Elms
CHRISTCHURCH

— Hotel Elms Conference Pack

A Seamless Canterbury Conference Experience



Welcome to the Garden City

When you choose a high-quality conference experience at the Hotel Elms, you'll find yourself conveniently located next to Canterbury's flourishing CBD.

Out-of-town guests will love the beautiful scenery and electric atmosphere that Christchurch has to offer, from the bustling Riverside Market to the stunning Port Hills. Once your guests have finished their post-conference adventures, they can unwind in one of our beautiful rooms, situated just 8km from the airport.

Delicious food is an essential part of what we do. From enjoying indulgent light bites to tasting our mouthwatering main courses, we provide a culinary experience that caters for all. Our contemporary cuisine is created by the talented on-site team at our iconic restaurant, Fig, where you can dine throughout your stay.

As well as outstanding food, high-quality service is at the heart of our well-executed conference experience. Our staff pride themselves on this service and their unbeatable knowledge of Canterbury's hidden gems.

It is our pleasure to offer a conference experience that you'll be proud to put your name on. We can't wait to welcome you.





Conference package details

A key way we facilitate an exceptional conference experience is through our bespoke break-out spaces. Each room offers the perfect environment for productive and inspiring sales meetings, seminars, boardroom meetings and product presentations, whether it's for 2 people, or 150.



NATURAL LIGHT



MODERN CONFERENCE
EQUIPMENT



BEAUTIFUL GARDENS



City View Room

(Up to 50 people)

A more intimate space to connect with smaller conference groups.



Green Room

(Up to 40 people)

Eclectic interior styling meets stunning indoor-outdoor flow in this space. You'll also have access to a breakout space in our beautiful gardens.



Garden View Room

(Up to 150 people)

This expansive collaborative space will facilitate and impress larger delegate groups, all while enjoying a beautiful garden view.



Sun Room

(Up to 10 people)

A sunshine-soaked stage to impress your guests, this intimate space opens onto our beautiful courtyard.



Conference rates

ROOM	HALF DAY (5 hours maximum)	FULL DAY
Garden View Room	\$599.00	\$749.00
City View Room	\$449.00	\$549.00
Green Room	\$399.00	\$479.00
Sunroom	\$249.00	\$349.00

From *\$72 per person	From *\$85 per person
Includes: <ul style="list-style-type: none">• Arrival tea and coffee• Mid-morning tea, coffee, juice & refreshment• Lunch• Venue hire• Stationery• Basic audio & visual• Bottled water (Minimum of 30 Delegates, additional venue fee will apply if less than 30)	Includes: <ul style="list-style-type: none">• Arrival tea and coffee• Mid-morning tea, coffee, juice & refreshment• Lunch• Afternoon tea, coffee & refreshment• Venue hire• Stationery• Basic audio & visual• Bottled water

*Pricing is subject to change - please enquire directly with hotel staff.
Minimum spend of \$500.00 on catering, or a non-catering fee applies of \$50.00 for Half day and \$100.00 for Full day.





Room specifications

The maximum number of delegates that each room can accommodate is indicated in the capacity chart below. Additional charges may apply for room configurations set outside of our standard set-up.

	City View Room	Garden View Room	Green Room	Sun Room	Exec Boardroom
Size	60m ²	200m ²	55m ²	25m ²	30m ²
Boardroom Style	24	60	20	10	10
Theatre Style	50	150	40	20	15
Classroom Style	24	70	20	-	-
Banquet Style	32	120	32	-	-
U-Shape Style	24	40	20	-	-
Cocktail Style	50	200	40	30	-



City View Room

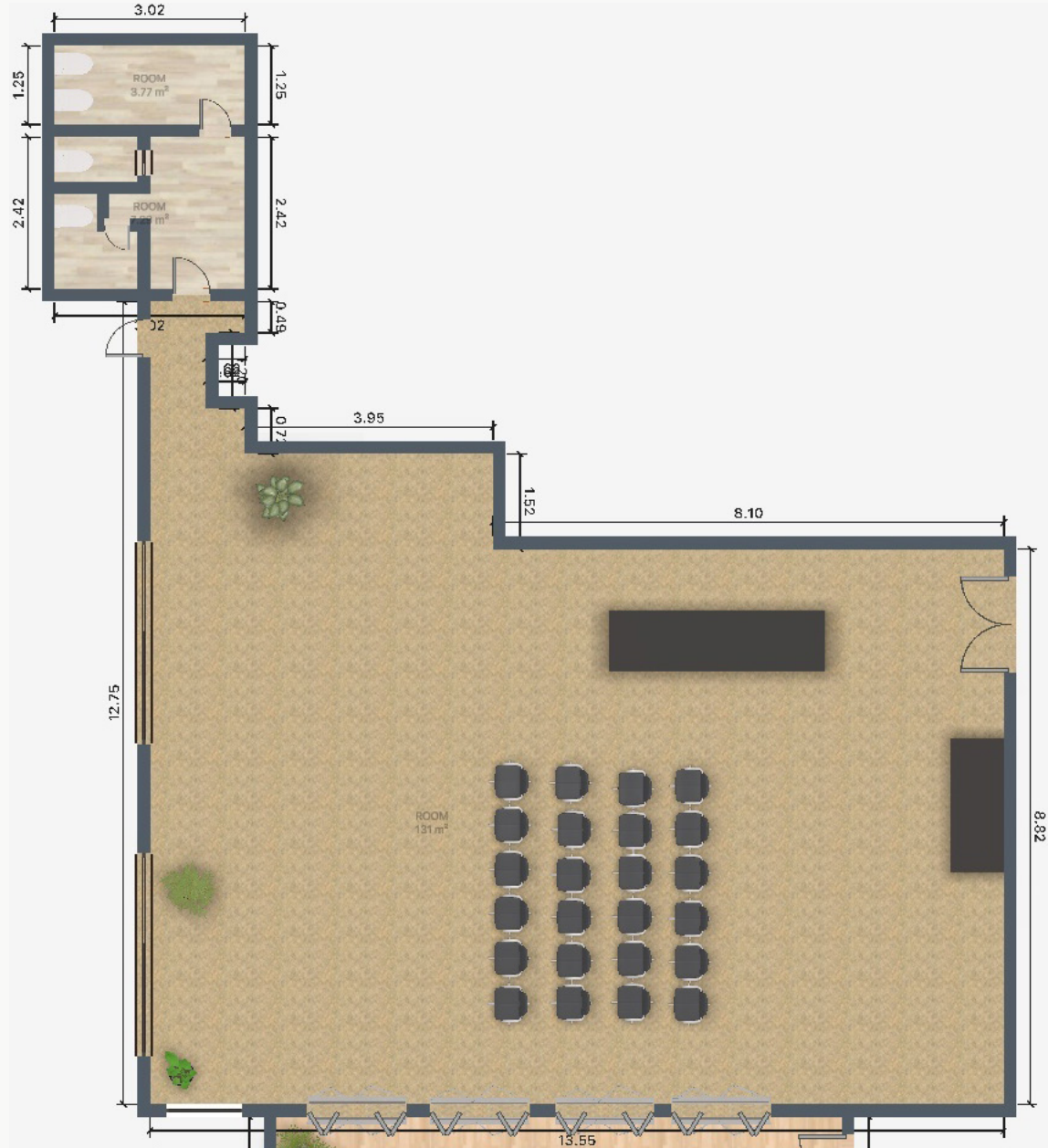
Floor plan example: U-Shape





Garden View Room

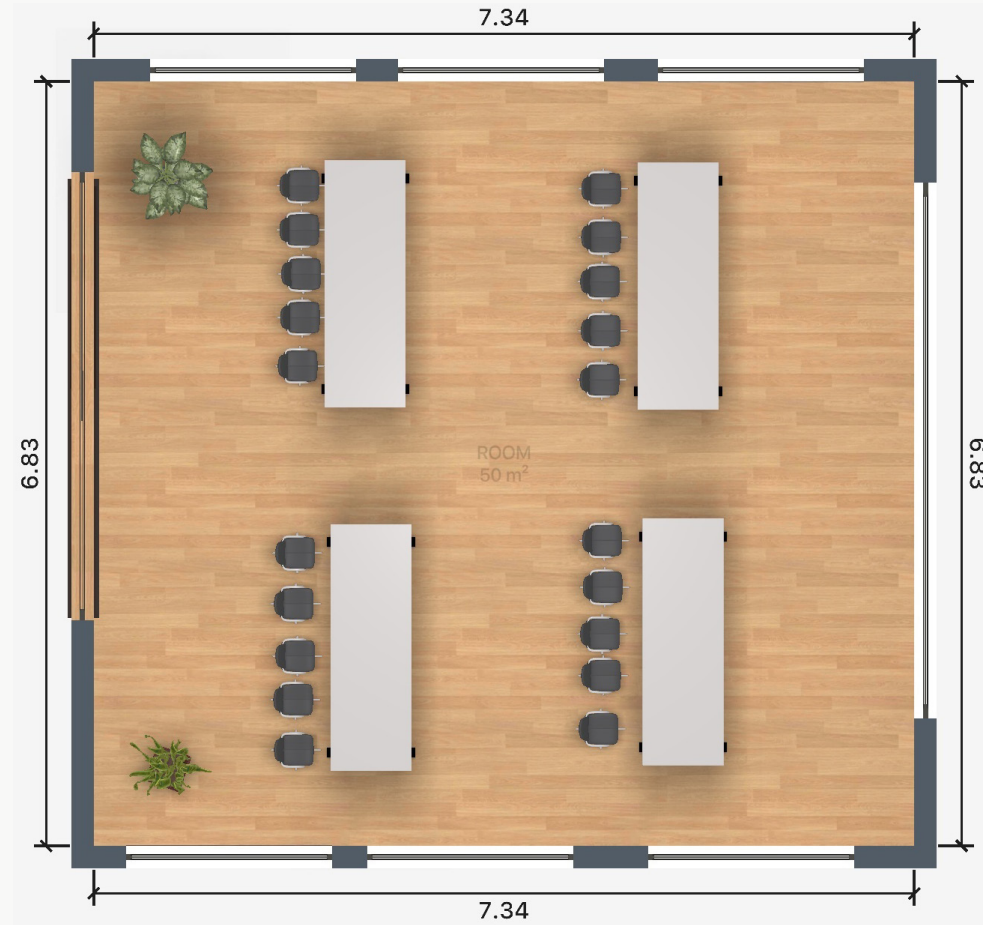
Floor plan example: Theatre style





Green Room

Floor plan example: Classroom style





Sunroom

Floor plan example: Boardroom style





Equipment

Complimentary screens and data projectors are offered in all of our packages and venues. We offer a PA system and microphone in our Garden View room when your conference/meeting is for 20 delegates or more on the Daily Delegate Package.

Equipment Type	Venue Availability	Price
Lectern	Garden View	Complimentary on request
Whiteboard & pens	All venues	Complimentary on request
Portable whiteboard & pens	All venues	Included in package
Flipchart stand, pens & paper	All venues	Included in package
Electronic whiteboard	All venues	\$POA - outsourced
Wireless microphone	Garden View	Complimentary
Writing pads & pens	All venues	Included in package
Data projector	All venues	\$100.00 per day if less than 20 delegates
Ultra fast unlimited wifi	All venues	Complimentary
Specialised AV equipment & staging	All venues	\$POA - outsourced



Accommodation

Guests that have travelled to attend your conference will be greeted with outstanding service at Hotel Elms. We offer 98 rooms over four levels, with accommodation options which include everything from standard to deluxe rooms, to ensure all guest needs are catered for.

We also offer complimentary, fully secure on-site parking and an airport shuttle (upon request). We're experts in providing an unforgettable accommodation experience and look forward to showing your guests from around the country Canterbury's spark and hospitality.





Local activities

Christchurch has so much to offer your out-of-town guests. From iconic entertainment venues and sights, right through to chances to get outdoors, there's an abundance of things to do once the conference comes to a close for the day.

Iconic sights

Isaac Theatre Royal

Christchurch Cathedral

New Regent Street

Places to dine

Riverside Market

Little High Eatery

Fig (our restaurant!)

Outdoor activities

Port Hills

The Gondola

Botanic Gardens





Book and be rewarded

Book your next meeting, conference or event at Hotel Elms and be rewarded.

- ✓ **\$50 PREZZY CARD**
When you spend \$5000 or more.
- ✓ **1 FREE NIGHT'S ACCOMMODATION**
When booking 20 or more rooms.





Hotel Elms
CHRISTCHURCH

— Hotel Elms

Enquiries

Email meetings@hotelelms.co.nz
Phone +64 03 355 3577
Mobile +64 27 506 6466

Address 456 Papanui Road,
Christchurch 8053,
New Zealand